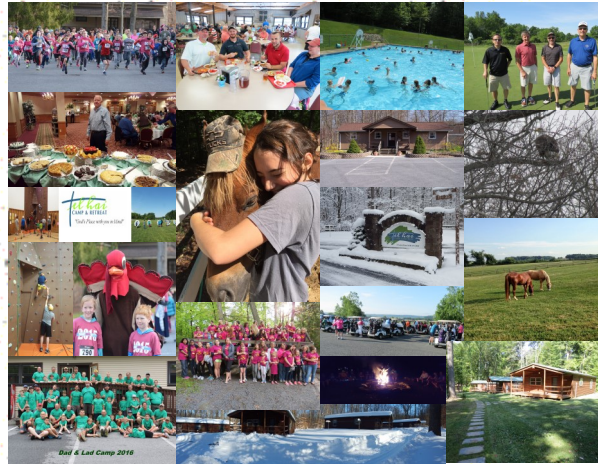


## Why do we need a Capital Campaign?

During 2016 Tel Hai Camp & Retreat developed a Master Plan laying the course for restoration and renewing the current campus over the next four years. Accomplishing the described plans requires partnerships and investments from donors understanding the benefits of camp ministry as an outreach to spread "The Good News" to thousands each year.

Your support to our Capital Campaign Program is an investment to continue the more than 65 year legacy of Tel Hai Camp & Retreat. As you read the enclosed information, will you prayerfully consider your involvement?



**Please contact Tel Hai Camp & Retreat for additional information on our Capital Campaign for more information and details on our plans:**

**phone: (610) 273-3969**  
**email: [info@telhaicamp.org](mailto:info@telhaicamp.org)**  
**website: [www.telhaicamp.org](http://www.telhaicamp.org)**

### Tel Hai Camp & Retreat

31 Lasso Drive  
Honey Brook, PA 19344-9261

Phone: 610.273.3969  
Fax: 610.273.3558  
E-mail: [info@telhaicamp.org](mailto:info@telhaicamp.org)

Tel Hai Camp & Retreat's mission is to encourage all to be followers of Jesus Christ and to provide a special place where people can meet with God and God can meet with people.

# Capital Campaign



**Yes, Please invest my donation in the Capital Campaign Program:**

**THANK YOU!**

Name: \_\_\_\_\_

Address: \_\_\_\_\_

Amount Given or Pledged: \_\_\_\_\_

Please return this form to: Tel Hai Camp & Retreat, 31 Lasso Drive, Honeyh Brook, PA 19344-9261  
For more information call 610.273.3969, email info@telhaicamp.org

**Visit our website: [www.telhaicamp.org](http://www.telhaicamp.org)**

### ***Why have a Capital Campaign now?***

Discussions were held throughout the year with Camp Leaders, Board Members, Staff, and a variety of other stakeholders on areas where the Camp required attention over the next four years. Our Master Plan has categorized these inputs into four specific areas:

- **Restoring:** "Many of our facilities are aging and there is an increase in demand."
- **Responding:** "Changing service expectations from our camp and retreat leaders."
- **Flexibility:** "Need for lodging & meeting options to ensure best usage of the camp."
- **Reviving:** "Enhance & revive our program activities and offerings"

### ***How can I help?***

Your donation to this Capital Campaign allows us to move forward with several projects over the next four years that include more new cabins, refurbishment of the swimming pool, new program activities, more lodging to support larger camps and retreats, and many more initiatives. We have a family that continues to match donations through the end of 2017 up to a total of \$45,000. **Will you help us?** Ultimately this renewal of the Camp will posture us to continue our legacy of "God's Place with you in mind". We want many more people to join us here and experience excitement in our Lord and Savior.

W

Simply fill out and return the attached slip to Tel Hai Camp & Retreat or make a

### **About Tel Hai Camp . . .**

Tel Hai Camp is owned by the Tel Hai Camp Association, a group of persons committed to the ministry of Christian camping. A Board of Directors oversees the operation of the camp and a full-time staff maintains the facilities and satisfies the needs of visitors.

Facilities include a seven acre lake, Junior Olympic-sized swimming pool, sleeping accommodations for approximately 200 persons, and much more.

We have been in the camping business for more than 65 years and are long standing members of Christian Camp and Conference Association.

*"For we are his workmanship, having been created in Christ Jesus for good works that God prepared beforehand so we may do them." Eph. 2:10*

